

The Ashbury C

1401 SQ FT

16527 134 Street NW



- Laminate in Great Room, Dinette, Kitchen, Pantry, Foyer and ½ Bath in “Glasgow Oak”
- “Sambuca Coventry” Kitchen Cabinets
- “Avario” Ceramic Tile in Mud Room, Second Floor Laundry, Ensuite and Main Bath
- 20.9 cu ft Top Freezer Fridge, Self Clean Range with Ceran Top, OTR Microwave/ Hood Fan and Built In Dishwasher in Black
- Front Load Washer/ Dryer
- White Chenille Hunter Douglas 1” Aluminum Blind Package, with Dustshield Treatment
- Front & Rear Landscaping
- 10’ x 10’ Rear Deck
- Upgraded Stone on Front Post
- Siding Harvard Slate, Black Metal Accents and Coos Bay Bluffstone
- East Facing Backyard, 262.5 Sq M Lot
- 35 Year Shingles
- Garage 14’ X 23’

Palisades Showhome

13716 165 Avenue, Edmonton NW

780.761.3722

palisadessales@bedrockhomes.ca

Job # PAL-0-032463 Lot 65, Block 67, Plan 1124995

Notes:

bedrockhomes.ca

VISIT US AT ANY OF OUR SHOWHOMES MON TO THURS 3 - 8PM, WEEKENDS & HOLIDAYS 12 - 5PM



The Ashbury C

1401 SQ FT

16527 134 Street NW



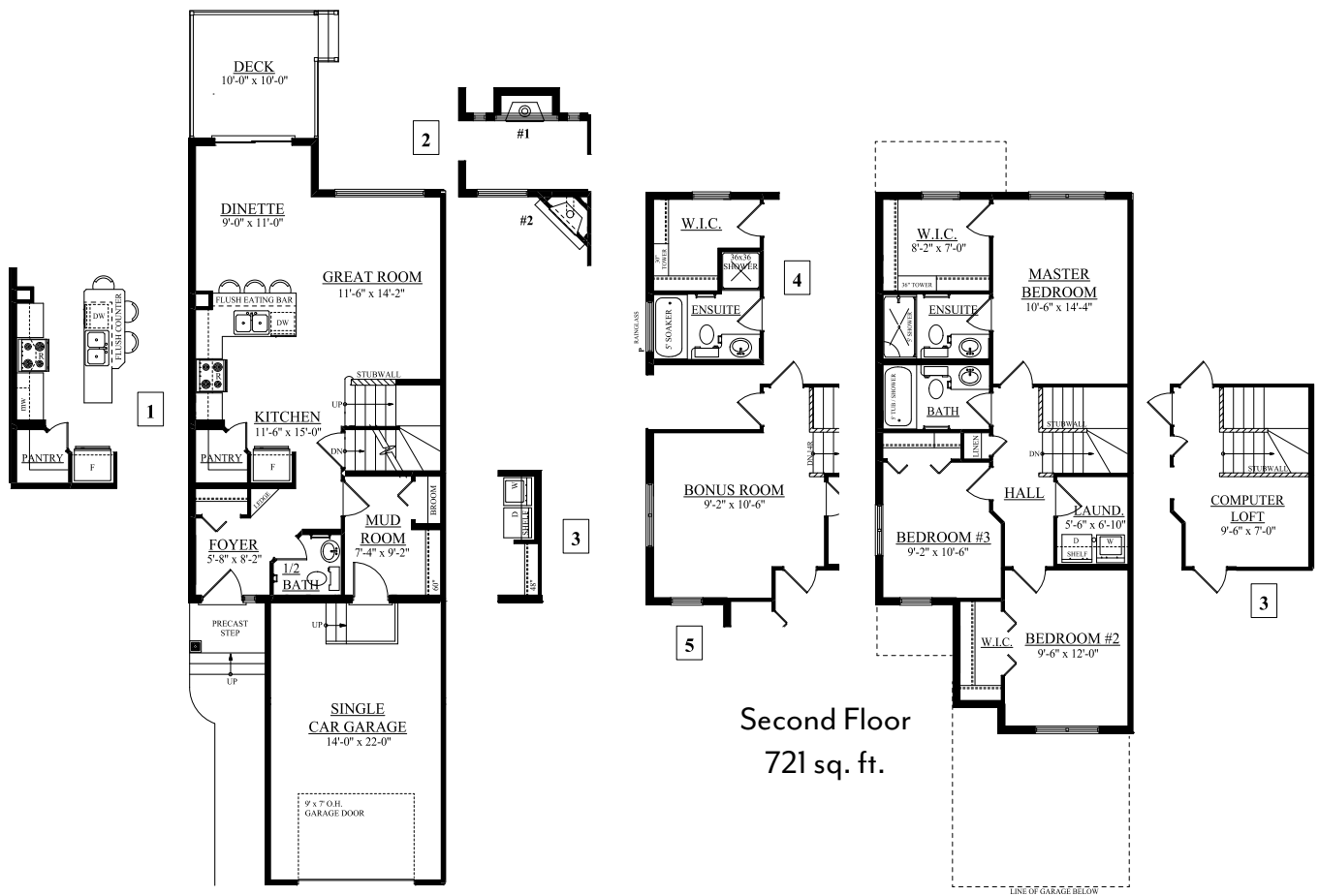
Palisades Showhome

13716 165 Avenue, Edmonton NW

780.761.3722

palisadessales@bedrockhomes.ca

Job # PAL-0-032463 Lot 65, Block 67, Plan 1124995



Main Floor
680 sq. ft.

Second Floor
721 sq. ft.

bedrockhomes.ca

VISIT US AT ANY OF OUR SHOWHOMES MON TO THURS 3 - 8PM, WEEKENDS & HOLIDAYS 12 - 5PM

